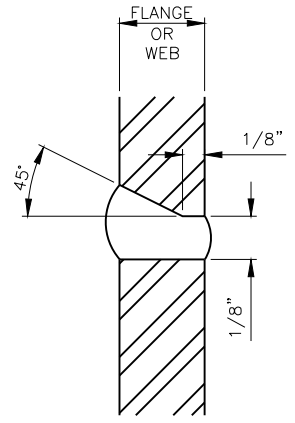
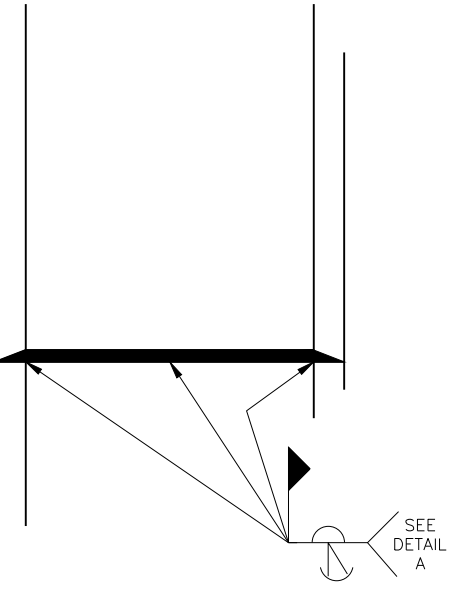
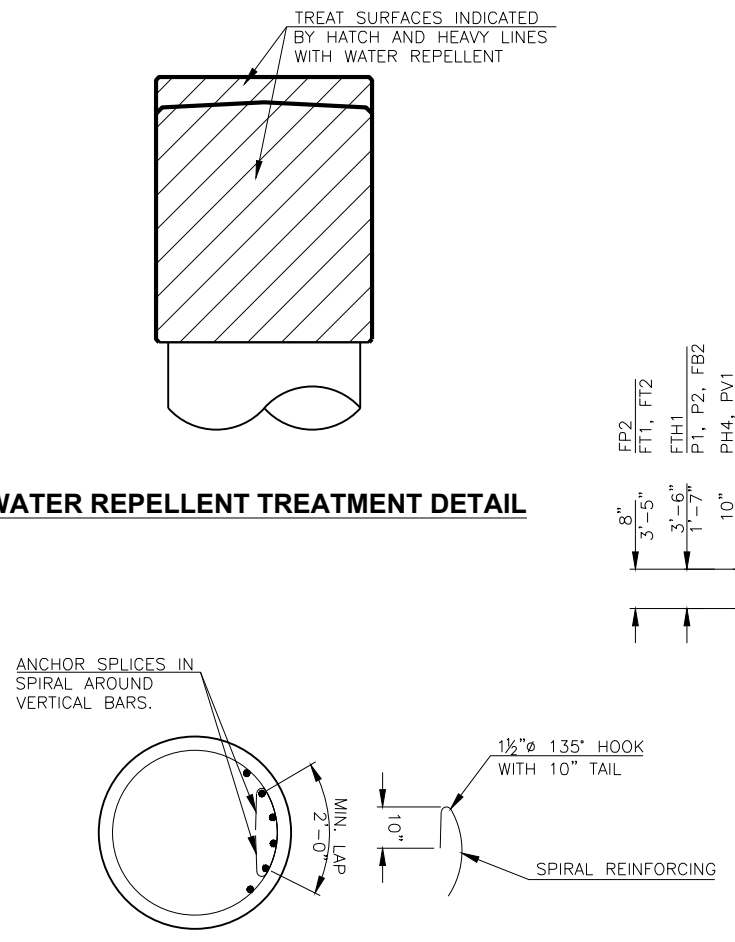


**DETAIL OF PILING**

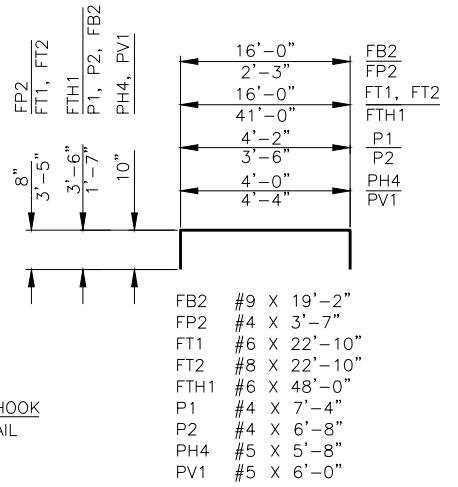
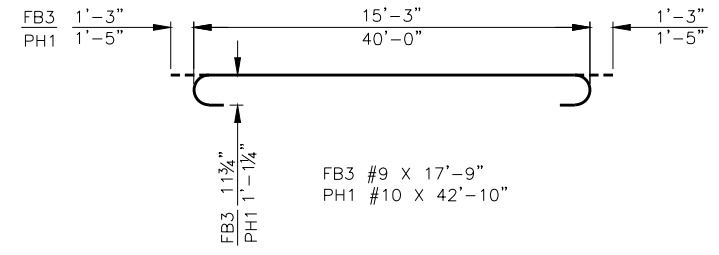
NOTE:  
 PROVIDE STRUCTURAL STEEL FOR PILING AND STEEL PLATE REINFORCING TIPS IN ACCORDANCE WITH AASHTO M270 (ASTM A572), GRADE 50. THE CONTRACTOR MAY USE MANUFACTURED DRIVING TIPS AS AN ALTERNATIVE TO THE STEEL PLATE REINFORCING TIPS SHOWN WITH APPROVAL BY THE BRIDGE ENGINEER. THE DEPARTMENT CONSIDERS THE COST OF STEEL PLATE REINFORCING TIPS OR MANUFACTURED DRIVING TIPS TO BE INCLUDED IN THE CONTRACT UNIT PRICE OF PILES, FURNISHED.



**WATER REPELLENT TREATMENT DETAIL**



**SPIRAL REINFORCING SPLICE DETAIL**



PIER BAR LIST				
ONE SHOWN - TWO REQUIRED				
EPOXY COATED REINFORCING				
MARK	SIZE	NO.	FORM	LENGTH
CV1	#9	30	BNT.	25'-7"
FB1	#6	16	STR.	16'-0"
FB2	#9	40	BNT.	19'-2"
FB3	#9	40	BNT.	17'-9"
FB4	#6	20	STR.	1'-2"
FB5	#6	8	STR.	4'-4"
FB6	#6	6	STR.	10'-4"
FH1	#9	14	STR.	41'-0"
FH2	#6	16	STR.	2'-6"
FH3	#6	2	STR.	5'-0"
FH4	#6	2	STR.	8'-7"
FH5	#6	1	STR.	15'-7"
FP1	#4	12	STR.	15'-6"
FP2	#4	84	BNT.	3'-7"
FT1	#6	18	BNT.	22'-10"
FT2	#8	42	BNT.	22'-10"
FTH1	#6	19	BNT.	48'-0"
P1	#4	25	BNT.	7'-4"
P2	#4	30	BNT.	6'-8"
PH1	#10	9	BNT.	42'-10"
PH2	#5	8	STR.	40'-0"
PH3	#10	9	STR.	40'-0"
PH4	#5	8	BNT.	5'-8"
PV1	#5	6	BNT.	6'-0"
S1	#6	48	BNT.	19'-10"
S2	#6	104	BNT.	15'-5"
PLAIN REINFORCING				
MARK	SIZE	NO.	FORM	LENGTH
CS1	W26	2	BNT.	701'-6"

① LENGTH SHOWN DOES NOT ACCOUNT FOR SPLICES. CONTRACTOR MAY ADD SPLICES AS NECESSARY, BUT PAYMENT WILL NOT BE MADE FOR EXTRA LENGTH REQUIRED FOR SPLICES.